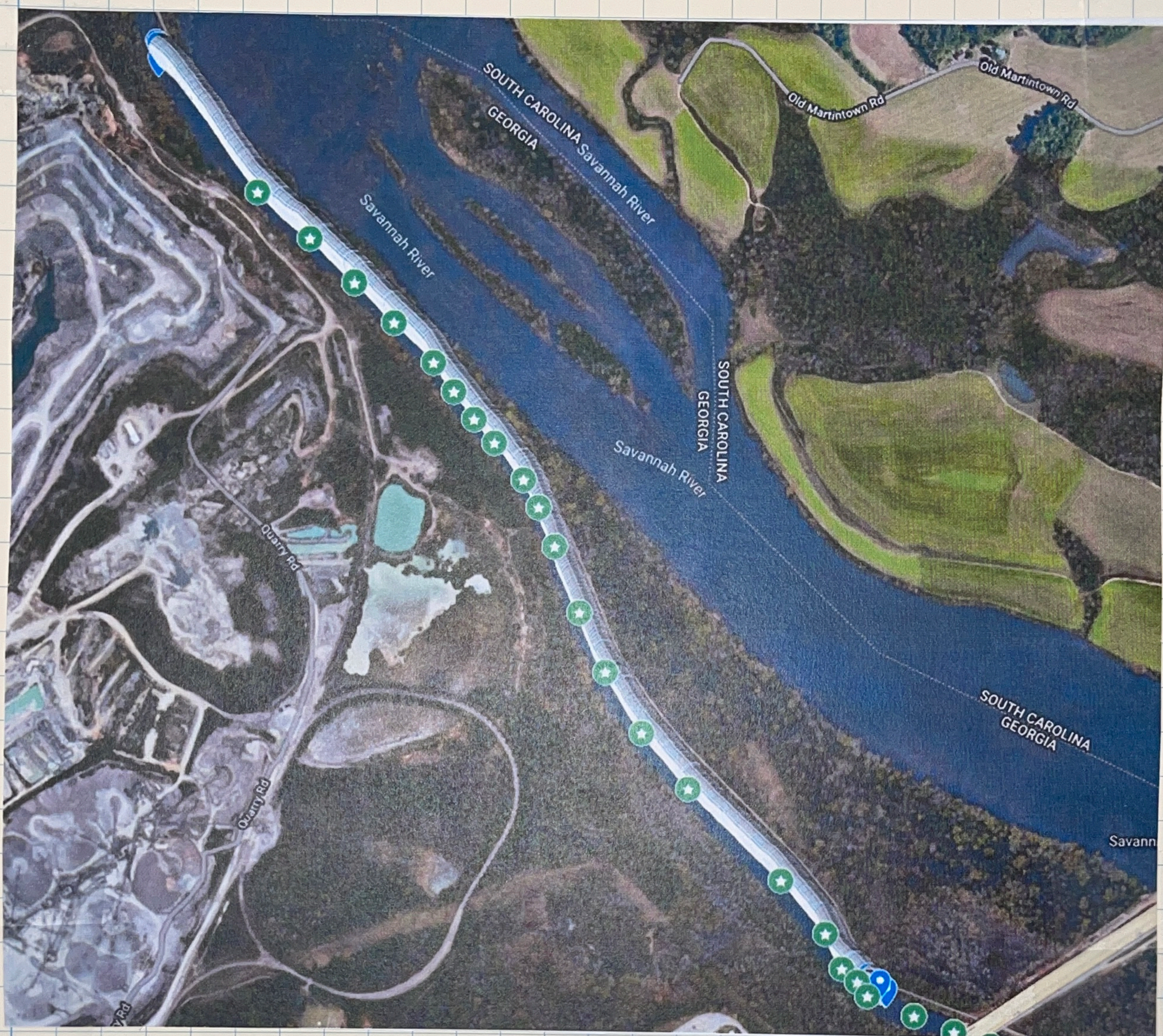


04/12/24
Wesley
Cooke

Canal Testing

17



The goal of the canal test was to have WIL autonomously navigate the entire canal.

WIL could not fight against the current to start. This resulted in me having to stop and reprogram WIL from a Kayak! I should bring a sign and label it "Cooke's Landing!"

After reprogramming, the experiment went well up until the battery for the motors ran low.

Improvements:

- | | |
|---|---|
| <input type="checkbox"/> Battery Life | <input type="checkbox"/> Object Avoidance |
| <input type="checkbox"/> Ease of Use | <input type="checkbox"/> Variable Speed |
| <input type="checkbox"/> Object Detection | <input type="checkbox"/> Path deviation measurements. |